

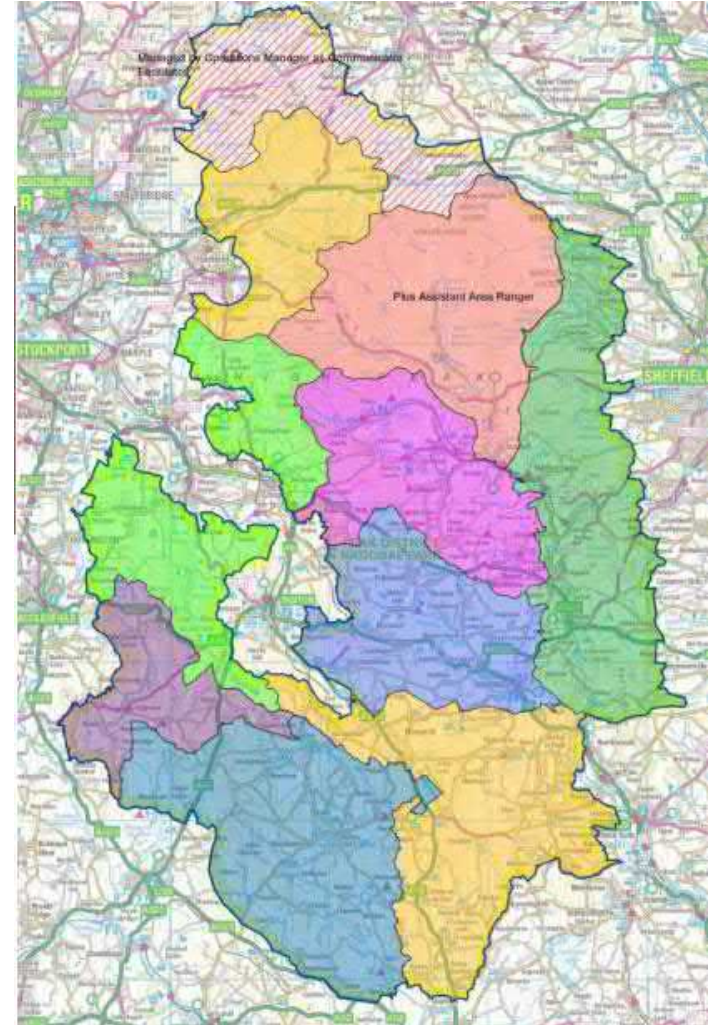
The Ranger Service Update





Team Structure

- 180 x Volunteer Rangers
- 10 x Area Rangers (+ 1 x Pennine Way Ranger)
- 2 x Access (& Accessibility) specialists
- 1 x Operations & Partnerships Team Leader
- 0.5 Business Support Officer
- 1 x Ranger Team Manager





Ranger Service Activities



- “To encourage **adherence** to [the CROW Act] , the Countryside Code, Rights of Way and good safety practice.”
- “To contribute to the **upkeep** of the National Park”
- “**Offering help, comfort, assurance, information, guidance, advice and observing and collecting information**”

From Volunteer Rangers, *Future of Volunteering* Workshops, Oct 2020.



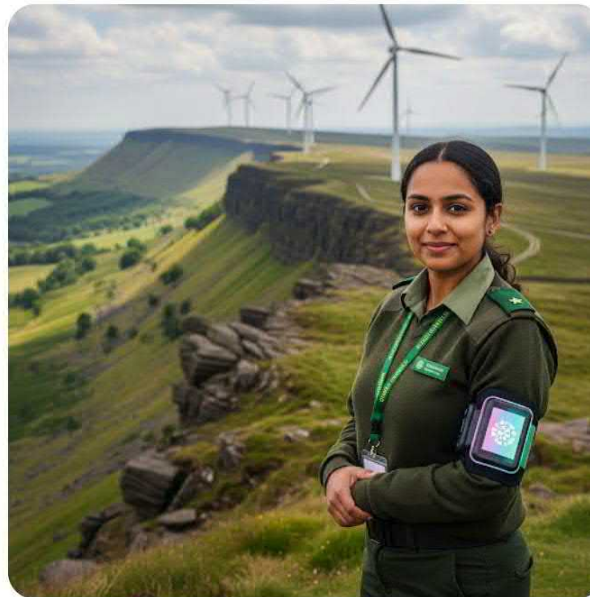
Challenges

- Financial pressures
 - Reduction of Engagement Service (Junior Rangers, Ambassador Schools, Diverse Audiences, Health & Wellbeing etc)
 - Climate change
 - Increased visitors (Rec Hubs)
-
- How can we best monitor, measure and demonstrate our value?
 - Where are the internal & external opportunities for funding?
 - How much role do we play around engagement activities?
 - How can we manage issues with path erosion, wildfire etc?
 - How can we best serve visitors, landowners and the landscape with future visitor patterns?



Future Rangers?

Here's the image of a Peak District National Park ranger in 2050:



Here's an image of a Peak District National Park ranger in 2100:



